

---



***WIDRC***

**October, 2013**

***Most Energy***  
**CNG/RNG**

- H. Tony Hartmann  
608-215-4446

**3510 Parmenter St.**  
**Middleton, Wisconsin**  
[www.mostcng.com](http://www.mostcng.com)



# ***MOST ENERGY, LLC***

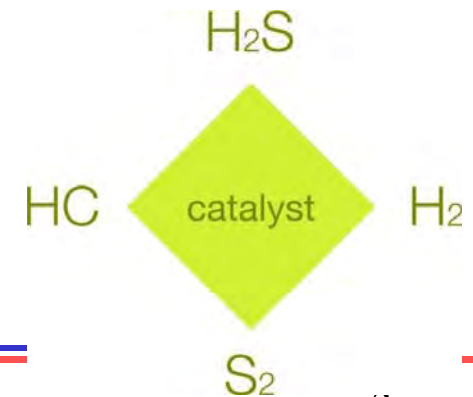
1) *Most CNG*



2) *Most Biogas*



3) *Most Clean Gas*



# MOST CNG

## 1) Most CNG





\* *CNG Value Proposition*

- a) Cheaper, cleaner, domestic fuel
- b) Redundant system/'conversion' kits
- c) Bi-/Dual-Fuel, Dedicated & OEM options
- d) Pumps, Gas purchasing, RNG

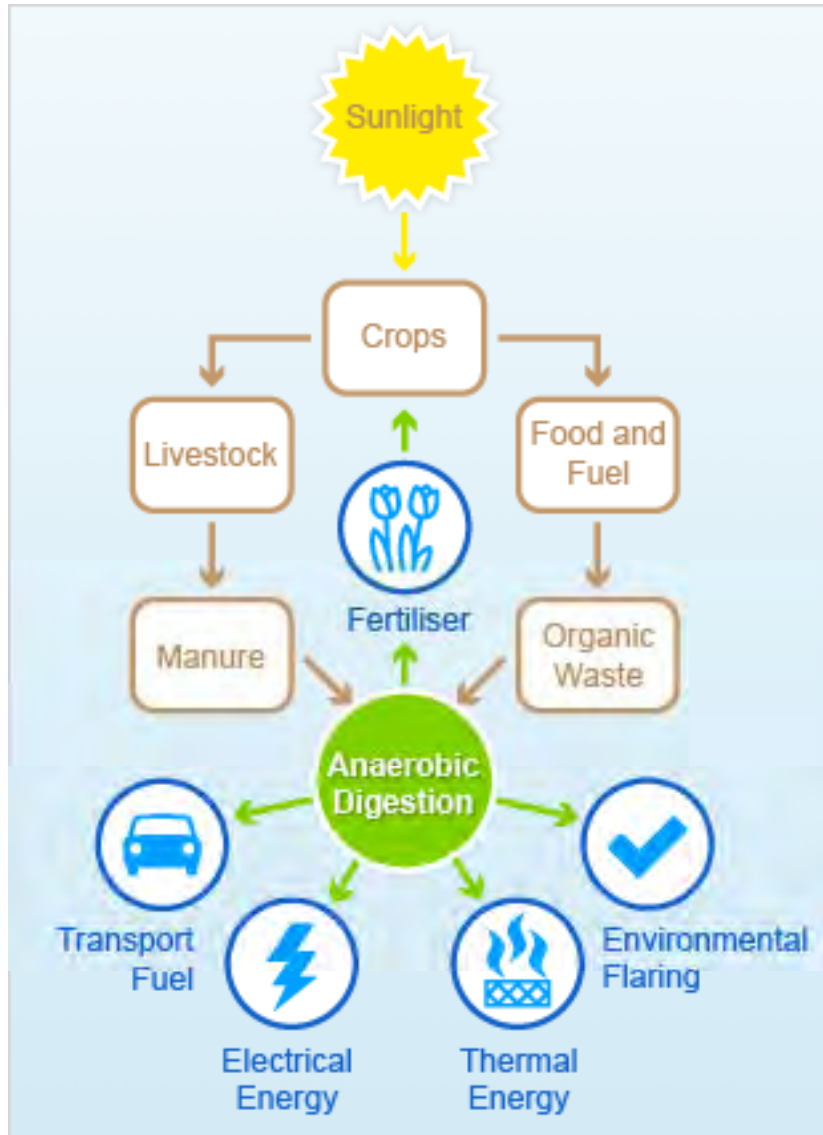
\* *CNG Roadmap*

- a) Fleet assessment
- b) ROI calculations/Economic analysis
- c) Strategic plan for gaseous fuel transition

# Most CNG/RNG Customers



## 2) Most Biogas



**MOST ENERGY**

**MOST ENERGY**

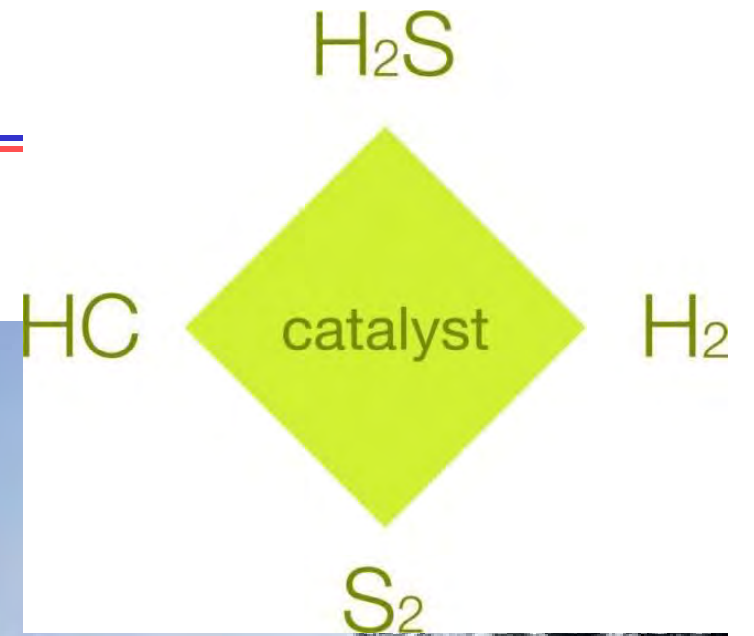


## 2) Most Biogas

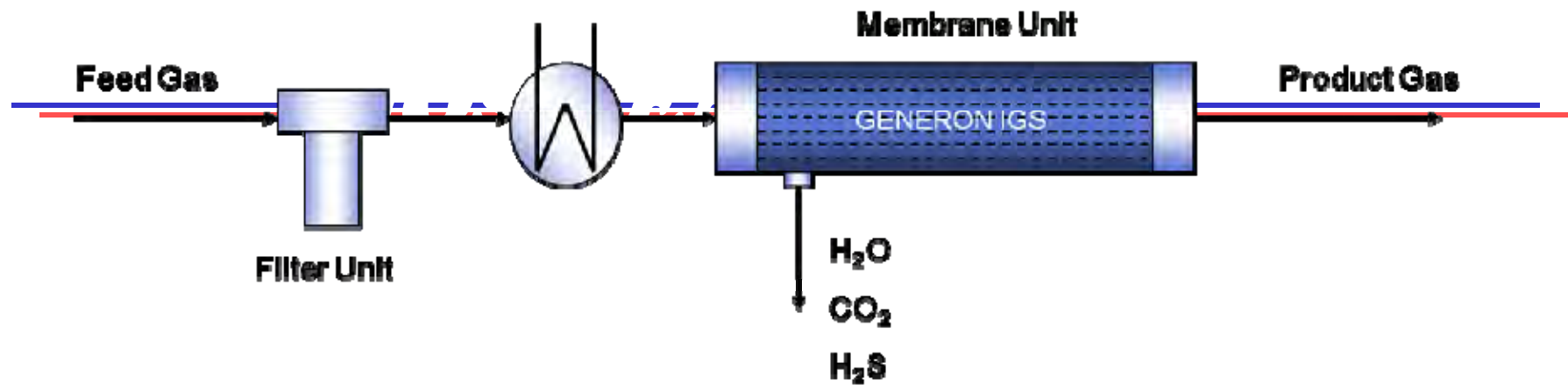
prevention

- Value Proposition; Energy & Pollution
- Technology/contractor selection
- Substrate recipe/optimization
- Negotiations; contractors/inputs/outputs
- Gas & co-product valuation/disposition

# 3) Most Clean Gas







### 3) Most Clean Gas

- Value Proposition; Biogas highest & best use
- Biogas & small/stranded natural gas purification
- Up-valued/*sweet* gas to pipeline spec'
- $H_2S$  petro-chemical technology
- Commercial engineering team

# *Most* Upgrading Technology

---

- **Flexible, proven, H<sub>2</sub>S removal**
  - Regenerating, high mass transfer coefficient
  - Non-toxic, biodegradable chemicals
  - Valuable sulfur by-product
  - Lowest operating cost

## **Enzymatic CO<sub>2</sub> separation**

- Lower cost/small physical footprint
- Non toxic chemicals

---

*'Advanced Biofuels'  
Production Team...*



**Organic Waste Producers**



---

*Advanced Biofuels  
Delivery & End-user Team...*

Balance of Methane Value Chain:

EPA/RIN Market(ers), Obligated Parties,  
RNG Users, Interstate Pipelines, Utilities



# ***Cow Manure Powers AMP Milk Trucks***

---

**12/4/12 - AMP Americas is now operating its trucking fleet on renewable natural gas produced from the country's first agricultural digester project to make products eligible for the Renewable Fuel Standard mandate, the company... owns two compressed natural gas fueling stations in Indiana and, in partnership with Fair Oaks Farms, manages a fleet of 42 CNG milk-transport trucks.**

Source: [www.environmentalleader.com](http://www.environmentalleader.com)

# ***AMP Americas Signs CNG Dairy Industry Deal***

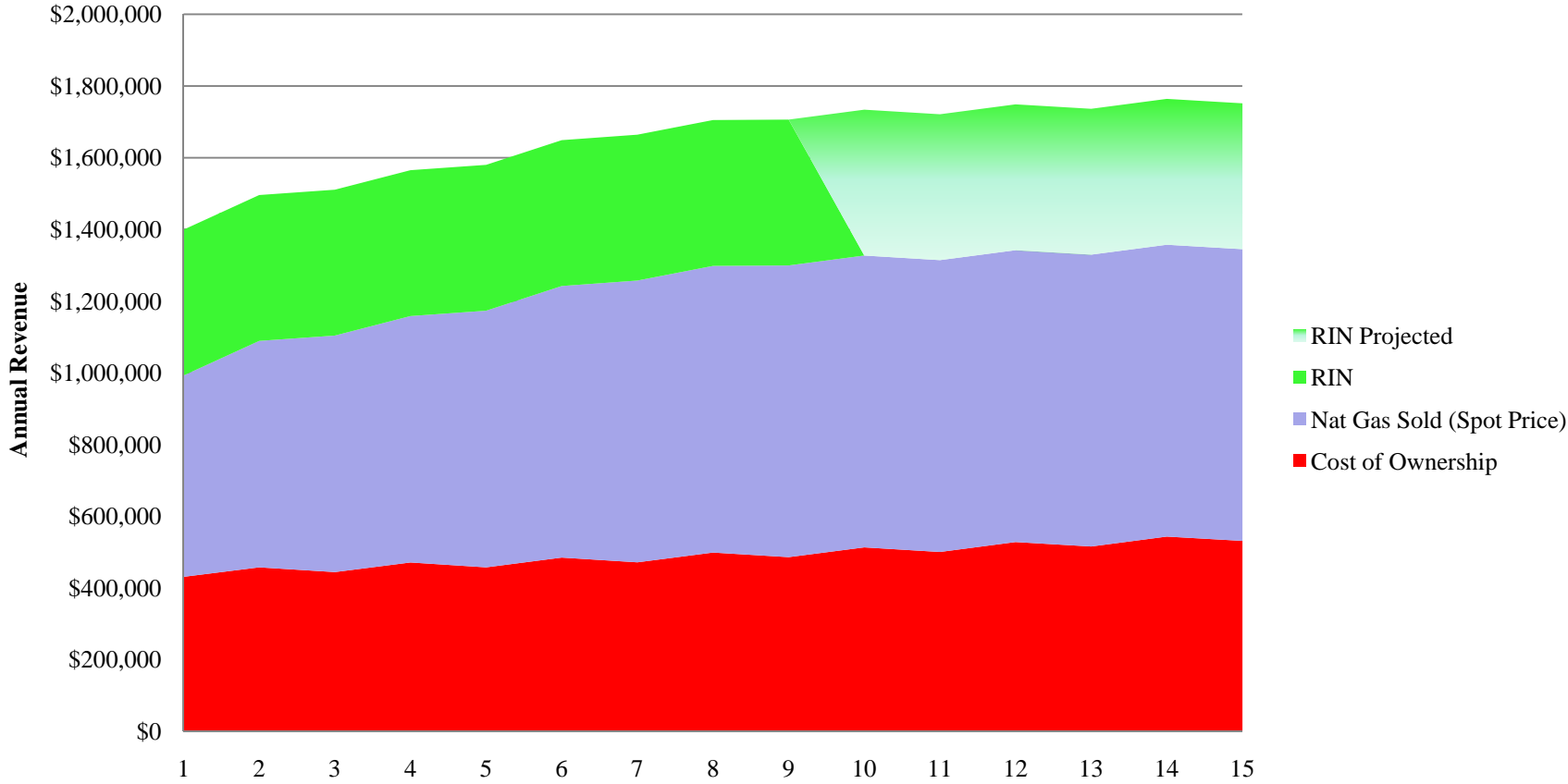
---

**10/9/13 - AMP Americas has signed a deal with Dairy Farmers of America and Select Milk Producers, both national dairy cooperatives, to work with haulers to convert their fleets to CNG. Combined, these co-ops produce more than 20 percent, or 40 billion pounds, of milk produced in America.**

Source: [www.environmentalleader.com](http://www.environmentalleader.com)

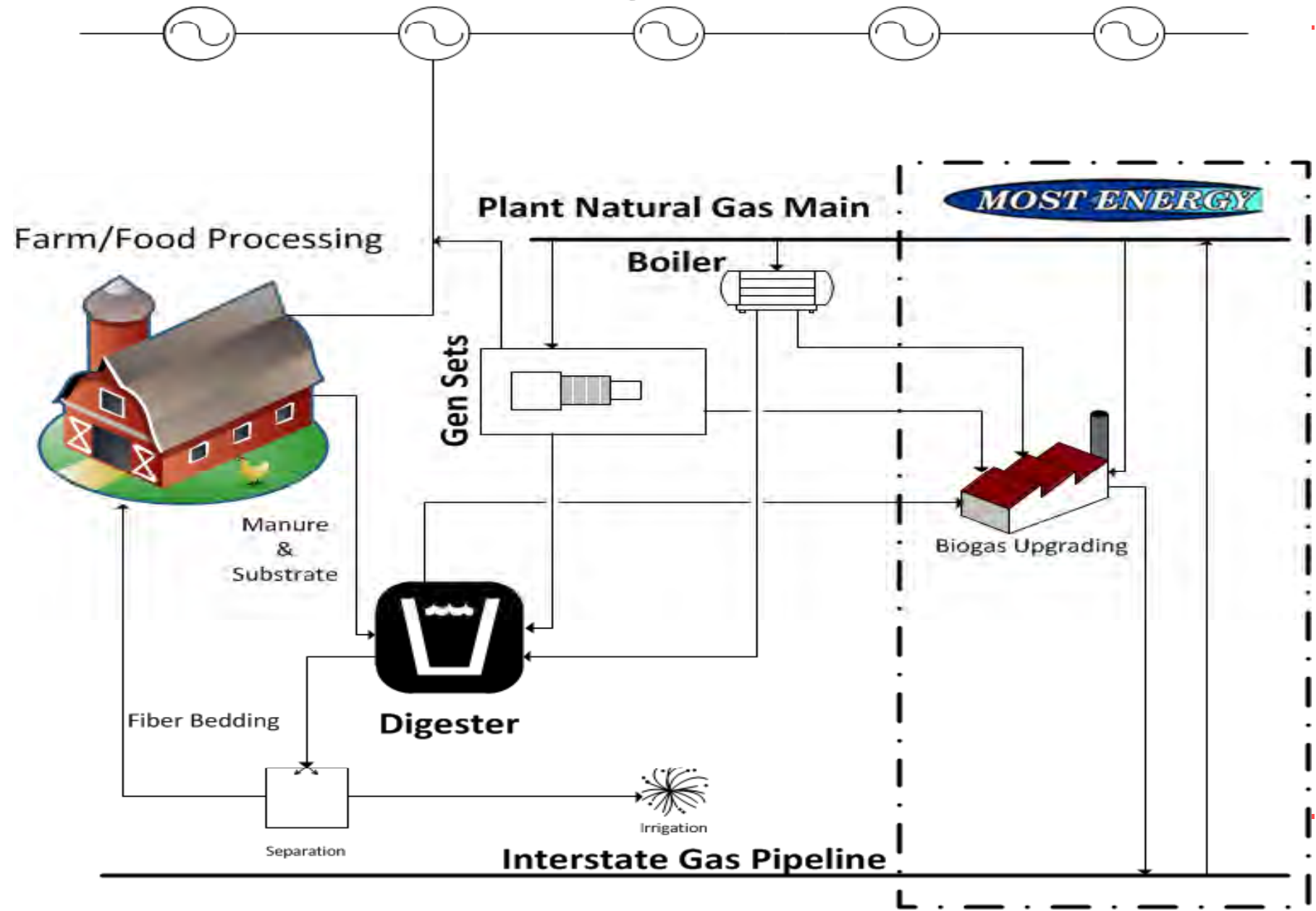
# Biofuel - RNG Premium

## Renewable Natural Gas (RNG) Advanced Biofuel Opportunity



# Operations and Construction Boundaries

4160/480 VAC





# Connecting the Dots

---

- 1) Advanced biofuel technology providers
- 2) Biofuel producers/RIN generators
- 3) EPA
- 4) RIN market(ers)
- 5) Obligated parties
- 6) RNG users
- 7) Interstate pipeline 'transmission' companies
- 8) Utilities

---

***WIDRC***

**October, 2013**

***Most Energy***  
**CNG/RNG**

- H. Tony Hartmann

608-215-4446

**3510 Parmenter St.**

**Middleton, Wisconsin**

[www.mostcng.com](http://www.mostcng.com)

